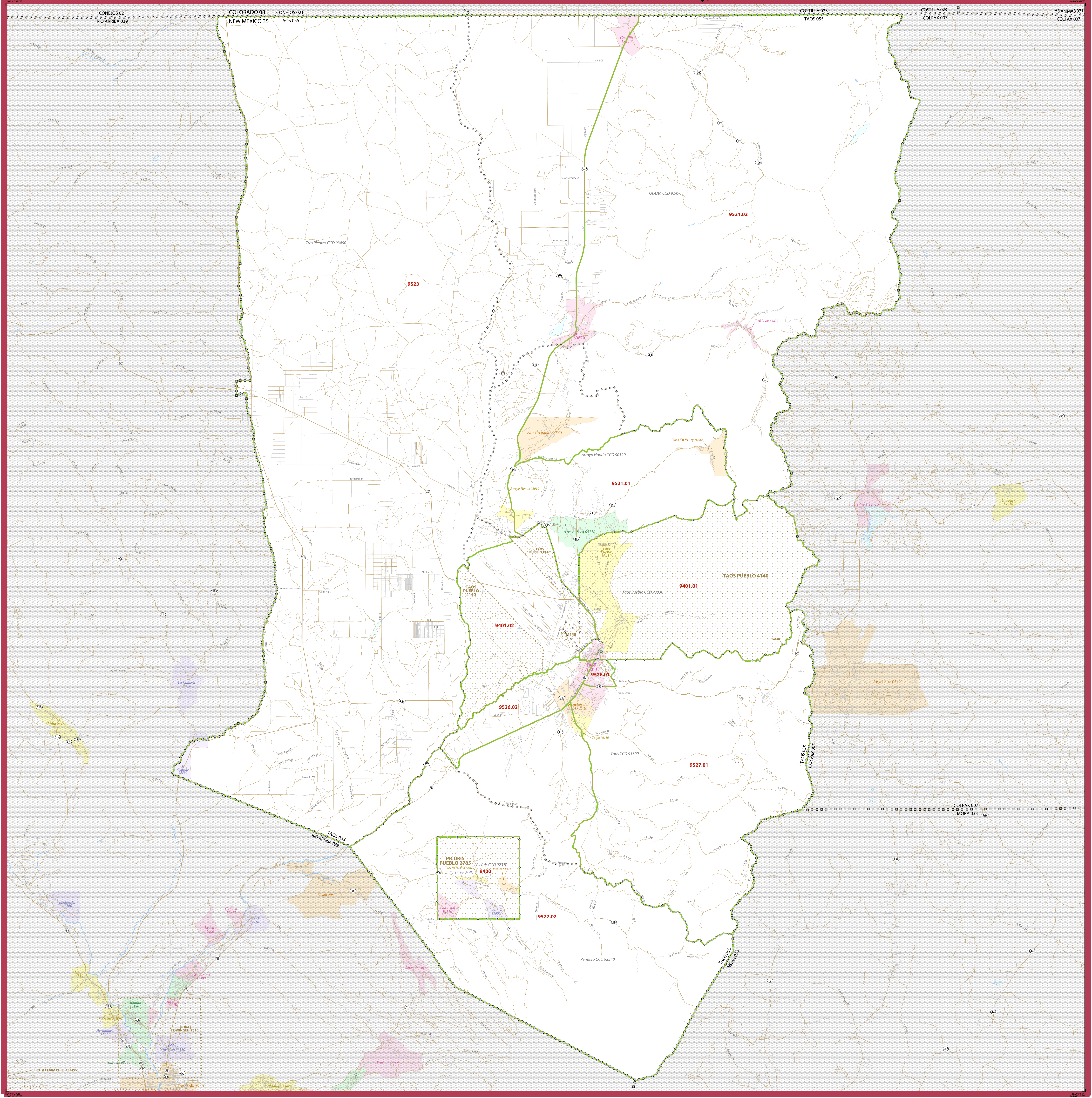


2020 CENSUS - CENSUS TRACT REFERENCE MAP: Taos County, NM



SYMBOL DESCRIPTION	SYMBOL	LABEL STYLE	SYMBOL DESCRIPTION	SYMBOL	LABEL STYLE
International	☆☆☆☆☆☆	CANADA	Incorporated Place 1,2		Davis 18100
Federal American Indian Reservation	L'ANSE RESVN 1880	Census Designated Place (CDP) ³		Incline Village 35100
Off Reservation Trust Land	T1880	Census Tract ³		33.07
State American Indian Reservation	Tama Resvn 9400	DESCRIPTION	SYMBOL	DESCRIPTION
Alaska Native Regional Corporation	▼▼▼▼▼	NANA ANRC 52120	Water Body		Pleasant Lake
State (or statistically equivalent entity)		NEW YORK 36	College or University		Colony
County (or statistically equivalent entity)		ERIE 029	Minor Civil Division (MCD) ³		Yonkers MCD
Census County Division (CCD), Census Subarea (CSA), or Unincorporated Territory (UT)	Bristol town 07485	Prison or Juvenile Detention Center		Prison
Consolidated City	Hanna CCD 91650	Navigable Boundary or Feature Not Elsewhere Classified		Yosemite NP
	MILFORD 47500	Inset Area		A1

OFF-RESERVATION TRUST LAND NAMES

14140 Taos

Where international, state, county, and/or MCD/CCD boundaries coincide, the map shows the boundary symbol for only the highest-ranking of these boundaries.

Geographic area names are followed by either their FIPS or census code.

1. A "*" following an MCD name denotes a false MCD. A "*" following a place name indicates that a false MCD exists with the same name and FIPS code as the place; the false MCD label is not shown.

2. Place label color corresponds to the place fill color.

3. Census tracts are identified by an up to four-digit integer number and may have an optional two-digit suffix; for example 23 or 1457.02. The census tract codes consist of six digits with an implied decimal between the fourth and fifth digit corresponding to the basic census tract number, but with leading zeros, and trailing zeros for census tracts without a suffix. The tract number examples above would have codes of 002300 and 145702, respectively.

Due to space limitations, some road names, along with other feature and geography names on the map, may not be shown.

